



GhIE

GHANA INSTITUTE OF ENGINEERING

4th INDUCTION CEREMONY



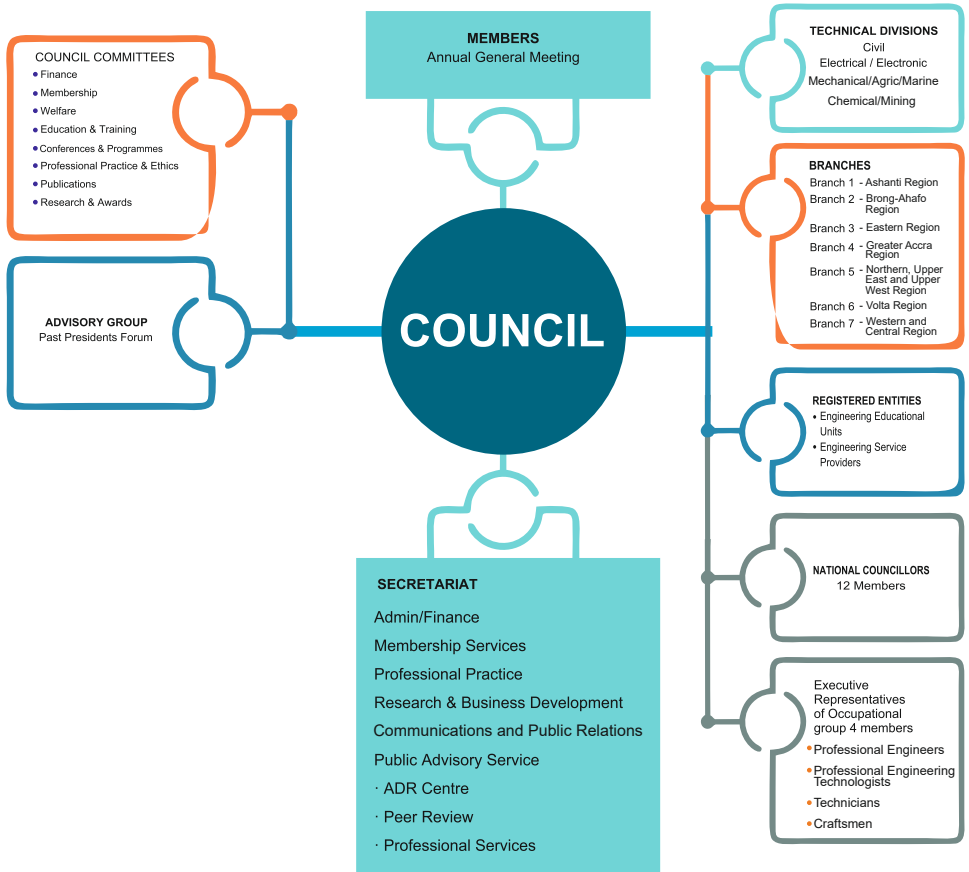
31st March, 2026

Engineering Centre,
Roman Ridge, Accra

9:00am & 2:00pm

SUSTAINABLE DEVELOPMENT GOALS







9:00 am **Ghana National Anthem/GhIE Anthem**

1. **Opening Prayer**
Ing Samuel Boamah Danquah, SPE-GhIE
2. **President's Welcome Remarks**
Ing Ludwig Annang Hesse, F-GhIE
(President, GhIE)
3. **Address by Chairman of Membership Committee**
Ing Michael A. Bekoe, SPE-GhIE
4. **Induction Ceremony**
Swearing of Oath
Ing Ludwig Annang Hesse, F-GhIE
(President, GhIE)
5. **Presentation of Certificates**
Chairs of Technical Divisions
Engineering Council (Registrar) - Ing Isaac Bedu
6. **Presentation of Awards & Remarks**
Engineering Council (Board Chair) - Ing Dr. David Sitsofe Addo
7. **Word of Advice**
Ing Sophia Tijani, F-GhIE
(President-Elect, GhIE)
8. **Closing Remarks**
Ing Dr. Mrs. Enyonam Kpekpena, F-GhIE, PMP
(Executive Director, GhIE)
9. **Closing Prayer**
Ing Evelyn Dugbakuo Sappor

MC: Ing Samuel Boamah Danquah, SPE-GhIE



2:00 pm **Ghana National Anthem/GhIE Anthem**

1. **Opening Prayer**
Ing Samuel Boamah Danquah, SPE-GhIE
2. **President's Welcome Remarks**
Ing Ludwig Annang Hesse, F-GhIE
(President, GhIE)
3. **Address by Chairman of Membership Committee**
Ing Michael A. Bekoe, SPE-GhIE
4. **Induction Ceremony**
Swearing of Oath
Ing Ludwig Annang Hesse, F-GhIE
(President, GhIE)
5. **Presentation of Certificates**
Chairs of Technical Divisions
Engineering Council (Registrar) - Ing Isaac Bedu
6. **Presentation of Awards & Remarks**
Engineering Council (Board Chair) - Ing Dr. David Sitsofe Addo
7. **Word of Advice**
Ing Frederick Asare-Yeboah, F-GhIE
(Past President, GhIE)
8. **Closing Remarks**
Ing Dr. Mrs. Enyonam Kpekpena, F-GhIE, PMP
(Executive Director, GhIE)
9. **Closing Prayer**
Ing Emmanuel Kwei Afutu, PE-GhIE

MC: Ing Edward Melomey PE-GhIE



**Ing Ludwig Annang
Hesse, F-GhIE**
President, GhIE

Ghana Institution of Engineering (GhIE) was officially founded in 1968 to promote quality engineering practice in Ghana comparable to global standards. The GhIE is the professional body which is responsible for the certification of engineering practitioners (Professional Engineers, Professional Engineering Technologists, Engineering Technicians and Engineering Craftsmen) prior to registration with the Engineering Council of Ghana. The GhIE derives its authority from the Professional Bodies Decree NRCD 143, 1973 and the Engineering Council Act, 2011 (Act 819). In 1999, Women in Engineering (WinE) was founded to attract more females into the profession.

The GhIE ensures that practitioners in the Engineering industry maintain professional standards, adhere to regulations, guidelines and codes of ethics of engineering practice by conforming to internationally established technical, environmental and safety standards.

The GhIE represents about 12,718 registered professionals who are spread over four main technical divisions namely CIVIL, ELECTRICAL, MECHANICAL and CHEMICAL. Emerging engineering disciplines such as Robotics, Specialized Marine, Aviation and Aerospace, Biomedical, Renewable Energy, Oil & Gas, etc. are each situated under one of the four Technical Divisions.

GhIE collaborates with the government (ministries, departments, agencies, district assemblies) and private sector (Built Environment Professionals) to enhance institutional practice in the built environment sector.



**Ing. Dr. Mrs.
Enyonam Kpekpena,
F-GhIE, PMP**
Executive Director, GhIE



**Ing Dr. Michael Ankamah
Bekoe, SPE-GHIE**

Chairman, Membership Committee

Dear Esteemed Inductees,

On behalf of the entire members of this great institution, I extend a heartfelt congratulations to you on achieving this momentous professional milestone. Today, you are joining a fraternity of professionals who uphold excellence, innovation, integrity, and service to society.

This moment demonstrates more than a celebration of your academic and professional accomplishments. It reveals your tenacity, discipline, and ethical responsibility. The rigor of the examination is challenging to many people, but you braced the storm and are being rewarded for your perseverance and excellence. Having successfully gone through

the three-staged examination process, council has thus recommended your admittance as full members of this institution.

You are being admitted into the class of professional engineers at a time where Ghana yearns for rapid economic transformation. It is a call for innovation, collaboration, and leadership. It is an invitation for engineers to rise and be counted. You are the custodian of economic and technological progress. Your work touches every facet of modern life and without you, the country will labor to develop. It is my hope that you will not be overwhelmed by the weight of expectation of the society.

Membership of this institution requires that you conduct yourself professionally with the public, clients/employers, and other engineering practitioners. I will leave you with the following pearls of wisdom.

- **Continuously develop and improve your knowledge, skills and competence through professional practice, participation in educational courses, reading pertinent literature, and attendance at professional meetings and seminars.**
- **Prioritise the safety, health, and welfare of the public in the delivery of your work.**
- **Desist from undertaking responsible engineering work for which you are not competent and qualified – i.e. use the engineering stamp responsibly.**
- **Endeavour to protect the engineering profession collectively and individually from misrepresentation and misunderstanding.**
- **Uphold the honour and dignity of the engineering profession.**

Finally, I invite you to be an active member of this noble Institution. Channel your knowledge, skills, and experiences to the various committees of the institution. Be active in Committee meetings, Branch activities, Annual General Meetings, and other sanctioned activities by the Council. Ensure that you pay your subscriptions, dues/levies promptly as a professional duty.

As you embark on this long professional journey, I implore you to bear the title 'Ing' with pride, dignity, and humility.

Best wishes,

Ing Dr. Michael Ankamah Bekoe, SPE-GhIE.
Chair of the Membership Committee.



**Ing Andy
Abeiku Benyarku
PE-GhIE-17814**



**Ing Barnabas
Nii Amarah Ashai
PE-GhIE-16632**



**Ing Bernard
Awortwe-Appiah
PE-GhIE-18038**



**Ing Christina
Lovely-Quao
PE-GhIE-17502**



**Ing Daniel
Amoah Osei
PE-GhIE-17561**



**Ing Emmanuel
Afrani Twumasi
PE-GhIE-17987**



**Ing Emmanuel
Danso Bamfo
PE-GhIE-16781**



**Ing Emmanuel
Kwabena Asamoah
PE-GhIE-17967**



**Ing Ernest
Evans Arthur
PE-GhIE-18157**



**Ing Ernest
Popeelong Buule
PE-GhIE-18190**



**Ing Evelyn
Dugbakuo Sappor
PE-GhIE-18181**



**Ing Ishmael
Archer Nkrumah
PE-GhIE-18271**



Ing Louis Dabuo
PE-GhIE-18230



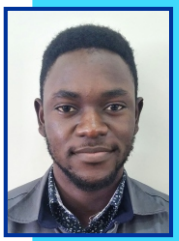
**Ing Nana Akua
Okaebean Danso**
PE-GhIE-17854



**Ing Nathaniel
Essilfie-Conduah**
PE-GhIE-16743



**Ing Obed
Asamoah Wettley**
PE-GhIE-18039



**Ing Roderick
Nyamenim Dansel**
PE-GhIE-18234



**Ing Sarah
Owusuaa Ameyaw**
PE-GhIE-18104



**Ing Wisdom
Senyo Kodzi**
PE-GhIE-17941



**Ing Amanda
Amissah Arthur**
PE-GhIE-17426



**Ing Josephine
Wesoamo Valajega**
PE-GhIE-09771



**Ing Kwame
Samm Yorke**
PE-GhIE-15287



**Ing Nana
Kyei Adarkwa**
PE-GhIE-16633



**Ing Raphael
Teye Mensah**
PE-GhIE-18096



**Ing Wilfred
Kojo Attu
PE-GhIE-15753**



**Ing Ebenezer Nicholson
PE-GhIE-17026**



**Ing Akua
Gyamfuah Oppong
PE-GhIE-16897**



**Ing Alex
Kwadwo Asamoah
PE-GhIE-16424**



**Ing Beatrice Obeng
PE-GhIE-18095**



**Ing Bernard
Aniniagyei-Kesse
PE-GhIE-18155**



**Ing Cyril
Elikem Ohene
PE-GhIE-18215**



**Ing Dennis Laryea
PE-GhIE-16410**



**Ing Desire
Mawutor Klutsey
PE-GhIE-18087**



**Ing Desmond
Koranteng Acheampong
PE-GhIE-18194**



**Inge Emmanuel
Acquah
PE-GhIE-15244**



**Ing Emmanuel
Brako-Kwakye
PE-GhIE-17103**



**Ing Emmanuel
Ofori Anim
PE-GhIE-18132**



**Ing Enock Osei
PE-GhIE-17999**



Ing Ernest Oppong
PE-GhIE-18178



**Ing Farouq
Alhassan Somoa**
PE-GhIE-18140



**Ing Felix
Mensah Taylor**
PE-GhIE-18133



**Ing Festus
Aidoo Larweh**
PE-GhIE-18049



**Ing Frederick
Selorm Kobla Dogbe**
PE-GhIE-18201



**Ing Genevive
Ekuwa Fosuawah**
PE-GhIE-17841



**Ing Umar
Faruk Mumuni**
PE-GhIE-18209



**Ing Henry Ekow
Tachie-Menson**
PE-GhIE-16611



**Ing Hubert
Owusu Boateng**
PE-GhIE-18232



Ing Ibrahim Suleman
PE-GhIE-11907



Ing Isaac Gyasi
PE-GhIE-16761



Ing Isaiah Peprah
PE-GhIE-17206



**Ing Jerone
Tettey Okletey
PE-GhIE-16554**



**Ing Joachim Baissana
PE-GhIE-17631**



**Ing John Otabil
PE-GhIE-15266**



**Ing Jonathan
Seh Anti
PE-GhIE-15131**



**Ing Joseph
Asare Appiah
PE-GhIE-18091**



**Ing Joseph
Nana Prempeh
PE-GhIE-16810**



**Ing Josephine
Fofie Konama
PE-GhIE-17920**



**Ing Justice Mensah
PE-GhIE-17574**



**Ing Kelvin Mawuena
Ramsey Lartey
PE-GhIE-18244**



**Ing Kenneth
Aaron Ansah
PE-GhIE-15124**



**Ing Kodwo
Duku Wilson
PE-GhIE-17994**



**Ing Joel Kings
PE-GhIE-17535**



**Ing Kwaku
Anim Asare
PE-GhIE-11924**



**Ing Kwame
Kissi Osei
PE-GhIE-11029**



**Ing Kwesi
Mensa Austin
PE-GhIE-17203**



**Ing Mohammed
Abdul-Karim
PE-GhIE-17879**



**Ing Mohammed
Mutawakil Ahmed
PE-GhIE-18219**



**Ing Muntalabi Suraju
PE-GhIE-16660**



**Ing Nadrata Tahiru
PE-GhIE-18221**



**Ing Newman
Wanyalingo Anaba
PE-GhIE-17165**



**Ing Nii Adjei
Blebo Andrews
PE-GhIE-17029**



**Ing Noble Nkrumah
PE-GhIE-16022**



**Ing Ohemaa Akosua
Nyarko Danso
PE-GhIE-17048**



**Ing Opong
Mensah-Aborampah Jnr
PE-GhIE-18177**



Ing Oscar Baalabong
PE-GhIE-17913



Ing Prince Ofoe Maccarthy
PE-GhIE-18205



Ing Romeo Tweneboah Koduah
PE-GhIE-15781



Ing Samuel Mireku Sasu
PE-GhIE-12418



Ing Samuel Owusu-Ansah
PE-GhIE-15510



Ing Shamsiya Letsa Abass
PE-GhIE-16425



Ing Simon Teye Asare
PE-GhIE-17951



Ing Thomas Barnabas Panful
PE-GhIE-12587



Ing Nicholas Asare Tiekou
PE-GhIE-10724



Ing Diana Agbeti
PE-GhIE-16912



Ing Jonas Kwei Ayi
PE-GhIE-07686



Ing Seth Kwashie Acquayei
PE-GhIE-18035



Ing Ebenezer Cobbina
PE-GhIE-18236



Ing Jesse Dzidudu
PE-GhIE-12207



Ing Joseph Bundan Daadiya
PE-GhIE-16721



Ing Mohammad Qamrul Huda
PE-GhIE-18242



Ing Priscilla Otoo
PE-GhIE-14217



Ing Emmanuel Kofi Senyo
PE-GhIE-18224



Ing Daniel Yaw Quainoo
PE-GhIE-18216



Ing Pearl Dela Ahiektor
PE-GhIE-18117



Ing Elias Tei Ofei
PE-GhIE-18054



Ing Mawuena Akosua Owusu
PE-GhIE-17542



Ing Samuel Dekpey
PE-GhIE-18246



Ing Joseph Asare Appiah
PE-GhIE-18091



**Ing Ransford
Wusah Bakuri
PE-GhIE-18284**



**Ing Raddo
Daniel Matey
PE-GhIE-18225**



**Ing Jude Ato
Kwamena Afer
PE-GhIE-18028**



**Ing Dr. Eric Adjei
PE-GhIE-18144**



**Ing Emmanuel
Arhin Eshun
PE-GhIE-17395**



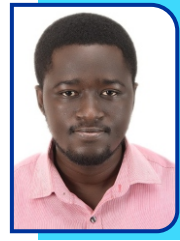
**Ing Al-Assad
Billey Abdullah
PE-GhIE-18251**



**Ing Alexander
Darkeh Nartey
PE-GhIE-17975**



**Ing Andrew Essah
Owiredu Annor
PE-GhIE-16832**



**Ing Aubrey
Effah Amankwah
PE-GhIE-18159**



**Ing Castro Gyamfi
PE-GhIE-17498**



**Ing David
Sapak Dekabil
PE-GhIE-18174**



**Ing Dennis Salifu
PE-GhIE-07418**



**Ing Dominic Essiaw
PE-GhIE-17944**



**Ing Ebenezer
Kwasi Abeka-Donkor
PE-GhIE-17094**



**Ing Emmanuella
Klenam Agbeve
PE-GhIE-18070**



**Ing Ernest Osei
PE-GhIE-16818**



**Ing Evans
Ebo Sarpong
PE-GhIE-16375**



**Ing William
Duodu Asihene
PE-GhIE-14914**



**Ing Farid
Al-Gaba Abdulai
PE-GhIE-17900**



**Ing Felix
Tetteh Pardi
PE-GhIE-18033**



**Ing Francis
Akowuah
PE-GhIE-17539**



**Ing Francis
Kwakwa Arthur
PE-GhIE-18097**



**Ing Frederick Bremang
PE-GhIE-17869**



**Ing Victor Sam Soglo
PE-GhIE-17950**



**Ing Joseph Dwamena
PE-GhIE-17938**



**Ing Justine Akosua
Dzidodo Adjimah
PE-GhIE-18128**



**Ing Nana
Agyeman Donkoh
PE-GhIE-18073**



**Ing Peter Clive
Mwinmaalo Kouro
PE-GhIE-17985**



**Ing Rufai Disu
PE-GhIE-18072**



**Ing Kafui
Ama Kuwornu
PE-GhIE-15352**



**Ing Kenneth Ayettey
PE-GhIE-11926**



**Ing Mahama Issah
PE-GhIE-18182**



**Ing Michael
Kwaku Sarpong
PE-GhIE-17346**



**Ing Michael
Mac-Carthy
PE-GhIE-16539**



**Ing Moses
Elikplim Dogbatse
PE-GhIE-17986**



**Ing Mrs. Mavis
Anim Adjei
PE-GhIE-18100**



**Ing Samuel
Kwame Dotsey
PE-GhIE-15508**



**Ing Azametsi-Mensah
Ezekiel
PE-GhIE-17930**



**Ing Sufyan Yakubu
PE-GhIE-17863**



**Ing Tahiru Sarbogu
PE-GhIE-17970**



**Ing Iliasu
Tanko Abdala
PE-GhIE-16596**



**Ing Emmanuel
Anguah Obuobi
PE-GhIE-12519**



**Ing Nana
Mensah Amamoo
PE-GhIE-10127**



**Ing Eugene
Adjei Adjetey
PE-GhIE-18184**



**Ing Godfred Asante
PE-GhIE-16956**



**Ing Felix
Opoku Agvemang
PE-GhIE-15792**



**Ing Hilarion
Ofosu-Ampiah
PE-GhIE-18027**



**Ing Ezekiel
Boman-i Bienta
PE-GhIE-12908**



**Ing Abeam
Danso Yaw
PE-GhIE-16630**



**Ing Albert Afli
PE-GhIE-17079**



**Ing Albert
Amoako Agyei
PE-GhIE-16846**



**Ing Albert
Kingsley Ayittey
PE-GhIE-17560**



**Ing Anass Issah
PE-GhIE-12444**



**Ing Benjamin
Kumah Tsegah
PE-GhIE-18237**



**Ing Byron Kojo
Afedzie Asamoah
PE-GhIE-17653**



**Ing Charles Opare
PE-GhIE-16366**



**Ing Darlington
Obeng Asomaning
PE-GhIE-14148**



**Ing Dr. Vitus
Mwinteribo Tabie
PE-GhIE-18266**



**Ing Ebenezer
Ofori Lamptey
PE-GhIE-09091**



**Ing Emmanuel
Adonteng
PE-GhIE-18057**



Ing Eric Afful
PE-GhIE-18211



Ing Eric Boadu
PE-GhIE-18077



Ing Evans Aryee
PE-GhIE-17072



**Ing Gilbert
Nanteeb Lary**
PE-GhIE-18111



**Ing Godfred
Appiah Obiri**
PE-GhIE-08749



**Ing Halimatu
Sadiya Ibrahim**
PE-GhIE-18148



**Ing Isaac Agostino
Kojo Bentum Woode**
PE-GhIE-18273



**Ing Joel-Alvin
Nii Adjetei Laryea**
PE-GhIE-17070



**Ing Joseph
Jeffrey Brocke**
PE-GhIE-17590



**Ing Keith
Delali Norgbey**
PE-GhIE-17647



**Ing Matthew
Kornkah Werekoh**
PE-GhIE-18055



**Ing Maxwell
Sallong Seluk**
PE-GhIE-17997



Ing Mensah Augustine
PE-GhIE-18188



Ing Michael Appiah Frimpong
PE-GhIE-18180



Ing Orison Kwaku Ofose
PE-GhIE-17519



Ing Peter Abekah
PE-GhIE-17884



Ing Prince Kwaku Osei
PE-GhIE-17640



Ing Rachel Narkie Oko-Matey
PE-GhIE-17818



Ing Richard Agyei Yeboah
PE-GhIE-15757



Ing Richard Boateng
PE-GhIE-17614



Ing Richard Okwabi
PE-GhIE-17250



Ing Seth Kwabena Buobi
PE-GhIE-08830



Ing Stephen Tamboh
PE-GhIE-18056



Ing Vanessa Naa Lamiokor Mills
PE-GhIE-18252



**Ing Emmanuel
Keni Atteh
PE-GhIE-18042**



**Ing David
Kwaku Boadu
PE-GhIE-18017**



**Ing Yennube Daabor
PE-GhIE-18118**



**Ing Clement
Nartey Tettey
PE-GhIE-11622**



**Ing Isaac Owusu
PE-GhIE-16804**



**Ing Zipporah
Kyerewah Amankwah
PE-GhIE-15309**



**Ing Ken
Amaale Atinga
PE-GhIE-18164**



ELECTRICAL



Ing Evans Otchere
PE-GhIE-17233



Ing Jerry Nyamekye
PE-GhIE-17236



**Ing Emmanuel
Kwei Afutu**
PE-GhIE-17232

CIVIL



Ing Godwin Boateng
PE-GhIE-18106



I, in the presence of these persons here, pledge the highest standards of moral, professional and ethical conduct.

I pledge to uphold, preserve, protect and defend the constitution of the Ghana Institution of Engineering (GhIE) and shall subject myself to the decisions and directives of the Council, the governing body of the Ghana Institution of Engineering.

I shall discharge my duties as an engineer in honesty, fairness and truthfulness and shall be just and courteous, exhibiting the highest form of moral philosophy.

In as far as it is within my capabilities, I shall co-operate in extending the effectiveness of the engineering profession by my contributions to the training of engineers and the safe practice of engineering in the Republic of Ghana and beyond.

I pledge to uphold the honour and dignity of the engineering profession and shall not advertise my work or merit in a self-laudatory manner, in all these, having due regards for the safety of human life, the environment and property, so help me God.

NAMES OF AWARD WINNERS



Chemical/Mining

Ing Nana Akua Okaebea Danso
PE-GhIE- 17854



Civil

Ing Ernest Oppong
PE-GhIE- 18178



Electrical/Electronic

Ing Ernest Osei
PE-GhIE- 16818



Mechanical

Ing Albert Agyei Amoako
PE-GhIE-16846



God bless our homeland Ghana
And make our nation great and strong,
 Bold to defend forever
The cause of Freedom and of Right;
 Fill our hearts with true humility,
 Make us cherish fearless honesty,
And help us to resist oppressors' rule
With all our will and might for evermore.

GhIE ANTHEM |

By Professor Mrs. Esi Awuah, HFGhIE



- 2x Engineering is the key for development
GhIE stands for Ghana's growth
We conceive, design and build for human basic needs
Protect nature for sustainability

- 2x With the help of God
The master engineer backed by excellence and integrity
GhIE is capable of making Ghana great and the world a better place to live

- GhIE is capable!
GhIE is capable!
Let's rise and build our world with hope
GhIE is capable!
GhIE is capable!
Let's rise and build our world with hope.

Allegro J = 110

En-gi-neer-ing is the key for de-ve-lop-ment G-H-I-E stands for Gha-na's growth

We conceive, design and build for human basic needs protect nature for sustainabil-ty

With the help of God the mas-ter En-gi-neer backed by excellence and in

-ter - gri - ty. G - H - I - E is ca - pa - ble of mak-ing Gha-na great and the

world a better place to live G - H - I - E is ca - pa - ble G - H - I
Is capa-ble

E is ca - pa - ble Let's rise! and build our World with hope G - H - I

E is ca - pa - ble G - H - I - E is capa-ble Let's
Is ca pa-ble

rise! and build our world - with hope.



MEMBERSHIP COMMITTEE MEMBERS

1.	Ing Dr. Michael Ankamah Bekoe	-	Chairman
2.	Ing Benedicta Acherekoh	-	Member
3.	Ing Dr. Bertha Akosua Tenkoramaa Darteh	-	Member
4.	Ing Harold Esseku	-	Member
5.	Ing John Getor Esq.	-	Member
6.	Ing Joseph Lewballah	-	Member
7.	Ing Edward Melomey	-	Member
8.	Ing Juliet Adu	-	Member
9.	Ing Kingsford Daniel Laryea	-	Member
10.	Ing Prof. Kwaku Amaning Adjei	-	Member
11.	Ing Kweku Asmah	-	Member
12.	Ing Prof. Nana Yaw Asiedu	-	Member
13.	Ing Nicholas Hammond	-	Member
14.	Ing Dr. Patrick Amoah Bekoe	-	Member
15.	Ing Roland Sackey	-	Member
16.	Ing Samuel Boamah Danquah	-	Member
17.	Ing Juliet M. Gbormittah	-	Secretariat
18.	Miss. Adobea Antwi	-	Secretariat
19.	Miss Marion Somuah Nyarko	-	Secretariat
20.	Mr. Richard Owusu Acheampong	-	Secretariat



MISSION STATEMENT

To Develop, Promote and Sustain Sound and Competent Engineering Practice in Ghana Comparable to Global Standards

VISION

To Build And Develop a Strong World Class Professional Body by Promoting Integrity, Accountability and Excellence in The Practice of Engineering in Ghana

The GhIE is the professional body which is responsible For certifying practising engineers in Ghana.

*The GhIE derives its authority from the **Professional Bodies Decree nrcd 143, 1973 and the Engineering Council Act, 2011 (ACT 819.)***

CORE OBJECTIVES

- *To establish and maintain a register of Engineering Practitioners Qualified to Practice in Ghana*
- *To ensure that members of the Ghana Institution of engineering maintain Professional standards, adhere to Regulations, guidelines and codes of Ethics of Engineering Practice*
- *To ensure that Engineering Practice in The country conforms to Established Technical, Environmental and Safety*



Diversifying our Generation Portfolio for Sustainable Power Supply

The Volta River Authority has, since 1961, harnessed the resources of the Volta River to provide electrical energy for industrial, commercial and domestic use in Ghana, as well as transportation, fishery and recreation.

Starting with a generation capacity of 588MW, VRA now operates close to

2,474.5MW from its hydro, thermal and solar plants.

VRA continues to diversify its generation portfolio by exploring cleaner, cheaper and renewable sources of power generation such as wind and solar energy to sustain power supply.



**VOLTA
RIVER
AUTHORITY**

*For further information, please contact
The Chief Executive*

Volta River Authority
Electro-Volta House
28th February Road
P. O. Box MB 77
Accra, Ghana

Tel: +233-30-2664941-9
Email: chiefx@vra.com
corpcomm@vra.com
Website: www.vra.com