



# GhIE

GHANA INSTITUTION OF ENGINEERING



# 46 INDUCTION CEREMONY

19th August, 2025

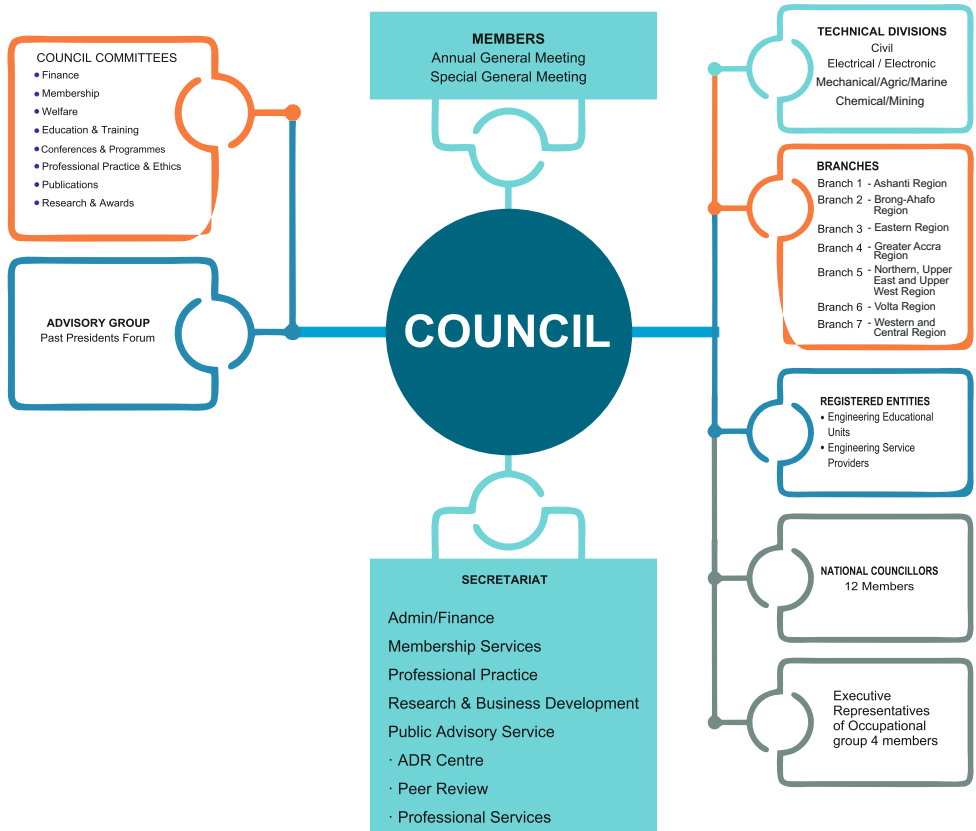
Engineering Centre,  
Roman Ridge, Accra

2:00pm

## SUSTAINABLE DEVELOPMENT GOALS



PHOTOBOX © 2020



2:00 pm **Ghana National Anthem/GhIE Anthem**

1. **Opening Prayer**  
Ing Samuel Boamah Danquah, SPE-GhIE
2. **President's Welcome Remarks**  
Ing Ludwig Annang Hesse, F-GhIE  
(President, GhIE)
3. **Address by Chairman of Membership Committee**  
Ing Michael A. Bekoe, SPE-GhIE
4. **Induction Ceremony**  
Swearing of Oath  
Ing Ludwig Annang Hesse, F-GhIE  
(President, GhIE)
5. **Presentation of Certificates**  
Chairs of Technical Divisions  
Mechanical Chair - Ing Divine Okutu, F-GhIE  
Electrical Chair – Ing Ebenezer Roberts, F-GhIE  
Civil Chair – Ing Michael Obeng Konadu, F-GhIE  
Chemical Chair - Ing Prof. Nana Yaw Asiedu, SPE-GhIE  
Confirmation Hearing - Ing Isaac Bedu (Registrar, Engineering Council)
6. **Remarks & Presentation of Awards**  
Engineering Council (Board Chair)  
Ing Dr. David Sitsfoe Addo
7. **Word of Advice**  
Ing Kwabena Bempong, F-GhIE  
(Immediate Past President, GhIE)
8. **Closing Remarks**  
Ing Sophia Tijani, F-GhIE  
(President-Elect, GhIE)
9. **Closing Prayer**  
Ing Michael Eshun, PE-GhIE

**MC:**

Ing Edward Melomey, PE-GhIE  
Ing Juliet Gbormittah, SPE-GhIE



**Ing Ludwig Annang  
Hesse, F-GhIE**  
President, GhIE

**G**hana Institution of Engineering (GhIE) was officially founded in 1968 to, promote quality engineering practice in Ghana comparable to global standards. The GhIE is the professional body which is responsible for the certification of engineering practitioners (Professional Engineers, Professional Engineering Technologists, Engineering Technicians and Engineering Craftsmen) prior to registration with the Engineering Council of Ghana. The GhIE derives its authority from the Professional Bodies Decree NRCD 143, 1973 and the Engineering Council Act, 2011 (Act 819). In 1999, Women in Engineering (WinE) was founded to attract more females into the profession.

The GhIE ensures that practitioners in the Engineering industry maintain professional standards, adhere to regulations, guidelines and codes of ethics of engineering practice by conforming to internationally established technical, environmental and safety standards.

The GhIE represents about 12,718 registered professionals who are spread over four main technical divisions namely CIVIL, ELECTRICAL, MECHANICAL and CHEMICAL. Emerging engineering disciplines such as Robotics, Specialized Marine, Aviation and Aerospace, Biomedical, Renewable Energy, Oil & Gas, etc. are each situated under one of the four Technical Divisions.

GhIE collaborates with the government (ministries, departments, agencies, district assemblies) and private sector (Built Environment Professionals) to enhance institutional practice in the built environment sector.



**Ing Samuel Magnus  
Asiedu, F-GhIE**  
Ag. Executive Director, GhIE



**Ing Dr. Michael Ankamah  
Bekoe, SPE-GhIE**

Chairman, Membership Committee

### Dear Esteemed Inductees,

On behalf of the entire members of this great institution, I extend a heartfelt congratulations to you on achieving this momentous professional milestone. Today, you are joining a fraternity of professionals who uphold excellence, innovation, integrity, and service to society.

This moment demonstrates more than a celebration of your academic and professional accomplishments. It reveals your tenacity, discipline, and ethical responsibility. The rigor of the examination is challenging to many people, but you braced the storm and are being rewarded for your perseverance and excellence.

Having successfully gone through the three-staged examination process, council has thus recommended your admittance as full members of this institution.

You are being admitted into the class of professional engineers at a time where Ghana years for rapid economic transformation. It is a call for innovation, collaboration, and leadership. It is an invitation for engineers to rise and be counted. You are the custodian of economic and technological progress. Your work touches every facet of modern life and without you, the country will labor to develop. It is my hope that you will not be overwhelmed by the weight of expectation of the society.

Membership of this institution requires that you conduct yourself professionally with the public, clients/employers, and other engineering practitioners. I will leave you with the following pearls of wisdom.

- **Continuously develop and improve your knowledge, skills and competence through professional practice, participation in educational courses, reading pertinent literature, and attendance at professional meetings and seminars.**
- **Prioritise the safety, health, and welfare of the public in the delivery of your work.**
- **Desist from undertaking responsible engineering work for which you are not competent and qualified – i.e. use the engineering stamp responsibly.**
- **Endeavour to protect the engineering profession collectively and individually from misrepresentation and misunderstanding.**
- **Uphold the honour and dignity of the engineering profession.**

Finally, I invite you to be an active member of this noble Institution. Channel your knowledge, skills, and experiences to the various committees of the institution. Be active in Committee meetings, Branch activities, Annual General Meetings, and other sanctioned activities by the Council. Ensure that you pay your subscriptions, dues/levies promptly as a professional duty.

As you embark on this long professional journey, I implore you to bear the title 'Ing' with pride, dignity, and humility.

Best wishes,

A handwritten signature in blue ink, appearing to read 'Michael Bekoe', written in a cursive style.

**Ing Dr. Michael Ankamah Bekoe, SPE-GhIE.  
Chair of the Membership Committee.**



**Ing Akwasi  
Dwomoh Agyapong**  
PE-GhIE-11619



**Ing Carl Selorm  
Kwasi Agbemenya**  
PE-GhIE-06688



**Ing Dorcas Opokuwaa  
Amoateng**  
PE-GhIE-15590



**Ing Ebenezer Blay**  
PE-GhIE-17479



**Ing Emmanuel  
Acheampong**  
PE-GhIE-17173



**Ing Emmanuel  
Twum-Barimah**  
PE-GhIE-15585



**Ing Mrs. Eunice  
Asante**  
PE-GhIE-15284



**Ing Ishmael  
Batsa Amueh**  
PE-GhIE-16605



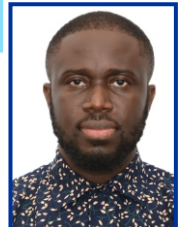
**Ing James Asmah**  
PE-GhIE-17504



**Ing Johnson  
Gbagbo Junior**  
PE-GhIE-16828



**Ing Kenneth  
Sefa Karikari**  
PE-GhIE-11102



**Ing Maxwell  
Dzidzinyo Agudogo**  
PE-GhIE-17443



**Ing Michaelis  
Tete Obuobi**  
PE-GhIE-16406



**Ing Nana Kwadwo  
Safo**  
PE-GhIE-16977



**Ing Paul Adjei**  
PE-GhIE-16998



**Ing Phyllis Esi  
Takyi-Yeboah**  
PE-GhIE-16669



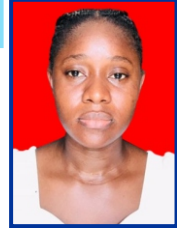
**Ing Sebastian  
Aboagye Andoh**  
PE-GhIE-16870



**Ing Seth Essuekyir**  
PE-GhIE-16400



**Ing Yusam Sumaila  
Momori**  
PE-GhIE-12561



**Ing Rebecca Armoh**  
PE-GhIE-15665



**Ing Abdul-Malik  
Sumaila**  
PE-GhIE-14421



**Ing Andrew  
Yartekwei Mensah**  
PE-GhIE-17175



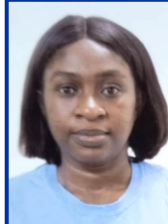
**Ing Ann Serwaa  
Akoto Kyei**  
PE-GhIE-11897



**Ing Anthony  
Kwadwo Owusu**  
PE-GhIE-14008



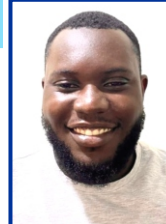
**Ing Austin Sroda  
Kwame Hevi**  
PE-GhIE-17126



**Ing Benedicta Edinam  
Afi Normegbor**  
PE-GhIE-16871



**Ing Bismark Sena  
Akator**  
PE-GhIE-15558



**Ing Caleb Yaw  
Mensah**  
PE-GhIE-17061



**Ing Edward Bonsu**  
PE-GhIE-11329



**Ing Emmanuel  
Beccles**  
PE-GhIE-17438



**Ing Emmanuel Owusu  
Banahene**  
PE-GhIE-16974



**Ing Ezekiel Yeboah  
Eduah**  
PE-GhIE-15526



**Ing Francis Austin**  
PE-GhIE-14754



**Ing Halidu Issaka**  
PE-GhIE-16983



**Ing Houda Adam  
Suleman**  
PE-GhIE-17064



**Ing Jacob Nii Martey**  
PE-GhIE-16742



**Ing Joseph Commey**  
PE-GhIE-16600



**Ing Julius Kumapley**  
PE-GhIE-16023



**Ing Kwaku Asante**  
PE-GhIE-17110



**Ing Kyei Kwame**  
PE-GhIE-15223



**Ing Lydia Akua  
Mensah**  
PE-GhIE-12049



**Ing Lydia Boamah**  
PE-GhIE-17227



**Ing Mabrouk  
Tahir Umar**  
PE-GhIE-10555



**Ing Magdalyn Maame  
Saarah Obimpeh**  
PE-GhIE-17455



**Ing Manuel Kyei Boateng**  
PE-GhIE-16908



**Ing Michael Amartey Amarah**  
PE-GhIE-16707



**Ing Michael Nyame**  
PE-GhIE-17087



**Ing Richard Asare Mensah**  
PE-GhIE-17425



**Ing Peace Afi Dumordzie**  
PE-GhIE-17196



**Ing Victor Kwame Atitso-Newman**  
PE-GhIE-17036



**Ing Rebecca Ebe Ohemeng Appiah**  
PE-GhIE-16563



**Ing Rosemond Quist Owusu**  
PE-GhIE-16895



**Ing Richard Owusu Asare**  
PE-GhIE-10562



**Ing Roland Appiani Mensah**  
PE-GhIE-16965



**Ing Rosemary Oppong Kwasi**  
PE-GhIE-12116



**Ing Zakari Abdul Karim Awini**  
PE-GhIE-16530



**Ing Rubina  
Salpawuni Alhassan  
PE-GhIE-17489**



**Ing Samuel Kwaku  
Addo  
PE-GhIE-08667**



**Ing Seth Odai Laryea  
PE-GhIE-16653**



**Ing Setor Kofi  
Elvis Mensah  
PE-GhIE-16796**



**Ing Solomon Tawiah  
Apafo  
PE-GhIE-17500**



**Ing Wisdom  
Kabbah Dartey  
PE-GhIE-17444**



**Ing Yaw Abu  
Aboagye-Agyeman  
PE-GhIE-17484**



**Ing Ezekiel Ferguson  
Arthur**  
PE-GhIE-17551



**Ing Aaron Elorm  
Dekportor**  
PE-GhIE-16452



**Ing Agyei Danso  
Emmanuel**  
PE-GhIE-12891



**Ing Angelo Kwabena  
Asabere Kwabia**  
PE-GhIE-12497



**Ing Augustine  
Eshun Mintah**  
PE-GhIE-17353



**Ing Bennette Komla  
Dzamefe**  
PE-GhIE-09568



**Ing Bless Kevin Adjei**  
PE-GhIE-12343



**Ing Daniel Goddard  
Brookman**  
PE-GhIE-15881



**Ing Daniel Opare Otoo**  
PE-GhIE-17257



**Ing Edward Osae  
Amoako**  
PE-GhIE-11925



**Ing Elisha Kwabena  
Antwi**  
PE-GhIE-16606



**Ing Emmanuel  
K' Parker Ahiaba**  
PE-GhIE-15755



**Ing Emmanuel  
Kwame Adeti**  
PE-GhIE-17052



**Ing Emmanuel  
Samuel Aidoo**  
PE-GhIE-17145



**Ing Felix Larsey  
Sowatsri**  
PE-GhIE-16379



**Ing Forgive Vadze**  
PE-GhIE-16662



**Ing Frederick  
Ntiamoah Kuranchie**  
PE-GhIE-10068



**Ing Geoffrey Asare**  
PE-GhIE-17093



**Ing Grace Agbavitor**  
PE-GhIE-15340



**Ing Isaac Ghantey**  
PE-GhIE-16955



**Ing Jephthah Afedzi  
Baidoo**  
PE-GhIE-15882



**Ing Joel Anaafi  
Ampomah Nkansah**  
PE-GhIE-17202



**Ing Kenneth Broni**  
PE-GhIE-16922



**Ing Michael Quist  
Bubafoor**  
PE-GhIE-16408



**Ing Nana Kofi Baabu**  
**Twum-Duah**  
**PE-GhIE-12467**



**Ing Nkwantabisah**  
**Owusu Mensah**  
**PE-GhIE-15105**



**Ing Richard Amoako**  
**Temeng**  
**PE-GhIE-15875**



**Ing Stephen Onomah**  
**PE-GhIE-12925**



**Ing Mrs. Yvonne**  
**Etornam Ntiforo**  
**PE-GhIE-05552**



**Ing Daniel Armstrong  
Abiero Mensah  
PE-GhIE-16859**



**Ing Dormenyo  
Agbodzah  
PE-GhIE-10781**



**Ing Dr. Akwasi  
Adu-Poku  
PE-GhIE-14291**



**Ing Dr. Yaw Kwakye  
Adofo  
PE-GhIE-17191**



**Ing Ebenezer Adusei  
PE-GhIE-17410**



**Ing Ezekiel Osei  
Owusu  
PE-GhIE-12408**



**Ing George Ayeh  
Kwapong  
PE-GhIE-17427**



**Ing Godwin Rajiv  
Deyegbe  
PE-GhIE-16883**



**Ing Kwabena  
Opoku-Acheampong  
PE-GhIE-16919**



**Ing Michael Owusu  
Agyei  
PE-GhIE-16024**



**Ing Mrs. Portia Kesewaa  
Addai-Boateng  
PE-GhIE-11841**



**Ing Nana Kojo  
Segu Gaisie  
PE-GhIE-15331**



**Ing Nicholas Botchwey**  
PE-GhIE-16775



**Ing Owura Sekyere  
Oppong-Mensah**  
PE-GhIE-16785



**Ing Peter  
Owusu-Koranteng**  
PE-GhIE-16849



**Ing Rafick Deku**  
PE-GhIE-16933



**Ing Richard Amoah  
Okoh**  
PE-GhIE-16117



**Ing Richard Asante**  
PE-GhIE-16798



**Ing Robert Andrew  
Ben-Smith**  
PE-GhIE-16893



**Ing Sefadzi Kwasi  
Awunyo-Akaba**  
PE-GhIE-09959



**Ing Suleman Zakaria**  
PE-GhIE-15186



**Ing Sydney Zenas  
Nii Armah Tagoe**  
PE-GhIE-17474



**Ing Hudu Osman**  
PE-GhIE-16720



**Ing Gifty Ama Opoku**  
PE-GhIE-16623



Chemical/Mining



**Ing Collins  
Anim-sackey  
PE-GhIE-17645**



**Ing Theophilus Ayitey  
Adjin Aryee  
PE-GhIE-17460**



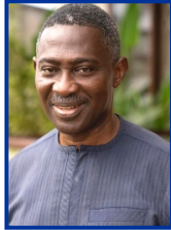
**Ing Kwasi  
Agyemang Bediako  
PE-GhIE-17105**



**Ing Peter Dickson  
PE-GhIE-08732**



Civil



**Ing Isaac Kwesi  
Brown**  
PE-GhIE-05204



**Ing Peter Hamza  
Kapih Forkah**  
PE-GhIE-08825

Mechanical/Agric/Marine



**Ing Michael Eshun**  
PE-GhIE-17656



**Ing Samuel Wilson**  
PE-GhIE-07788



**Ing Dr. Divine Okutu,**  
F-GhIE  
Mechanical/Agric/Marine  
Division



**Ing Ebenezer Ato Roberts,**  
F-GhIE  
Electrical/Electronic Division



**Ing M.O. Konadu,**  
F-GhIE  
Civil Technical Division



**Ing Prof. Nana Yaw Asiedu,**  
SPE-GhIE  
Chemical /Mining Division



I, ..... in the presence of these persons here, pledge the highest standards of moral, professional and ethical conduct.

I pledge to uphold, preserve, protect and defend the constitution of the Ghana Institution of Engineering (GhIE) and shall subject myself to the decisions and directives of the Council, the governing body of the Ghana Institution of Engineering.

I shall discharge my duties as an engineer in honesty, fairness and truthfulness and shall be just and courteous, exhibiting the highest form of moral philosophy.

In as far as it is within my capabilities, I shall co-operate in extending the effectiveness of the engineering profession by my contributions to the training of engineers and the safe practice of engineering in the Republic of Ghana and beyond.

I pledge to uphold the honour and dignity of the engineering profession and shall not advertise my work or merit in a self-laudatory manner, in all these, having due regards for the safety of human life, the environment and property, so help me God.



I ....., in the presence of these persons here, pledge the highest standards of moral, professional and ethical conduct.

I pledge to uphold, preserve, protect and defend the constitution of the Ghana Institution of Engineering (GhIE) and shall subject myself to the decisions and directives of the Council, the governing body of the Ghana Institution of Engineering.

I shall discharge my duties as a technologist in honesty, fairness and truthfulness and shall be just and courteous, exhibiting the highest form of moral philosophy.

In as far as it is within my capabilities, I shall co-operate in extending the effectiveness of the engineering profession by my contributions to the training of technologist and the safe practice of engineering in the Republic of Ghana and beyond.

I pledge to uphold the honour and dignity of the engineering profession and shall not advertise my work or merit in a self-laudatory manner, in all these, having due regards for the safety of human life, the environment and property, so help me God.

## NAMES OF AWARD WINNERS



Chemical/Mining

**Ing James Asmah**  
**PE-GhIE-17504**



Civil

**Ing Rebecca Ebe Ohemeng Appiah**  
**PE-GhIE-16563**



Electrical/Electronic

**Ing Joel Anaafi Ampomah Nkansah**  
**PE-GhIE-17202**



Mechanical

**Ing Ebenezer Adusei**  
**PE-GhIE-17410**



God bless our homeland Ghana  
And make our nation great and strong,  
    Bold to defend forever  
The cause of Freedom and of Right;  
    Fill our hearts with true humility,  
    Make us cherish fearless honesty,  
And help us to resist oppressors' rule  
With all our will and might for evermore.

# GhIE ANTHEM |

By Professor Mrs. Esi Awuah, HFGhIE



- 2x Engineering is the key for development  
GhIE stands for Ghana's growth  
We conceive, design and build for human basic needs  
Protect nature for sustainability
  
- 2x With the help of God  
The master engineer backed by excellence and integrity  
GhIE is capable of making Ghana great and the world a better place to live
  
- GhIE is capable!  
GhIE is capable!  
Let's rise and build our world with hope  
GhIE is capable!  
GhIE is capable!  
Let's rise and build our world with hope.

Allegro J = 110

En-gi-neer-ing is the key for de-ve-lop-ment G-H-I-E stands for Ghana's growth

We conceive, design and build for human basic needs protect nature for sustainabil-ty

With the help of God the mas-ter En-gi-neer backed by excellence and in

-ter -gr-ty. G-H-I-E is ca-pa-ble of making Ghana great and the

world a better place to live G-H-I-E is ca-pa-ble G-H-I-E is capa-ble

E is ca-pa-ble Let's rise! and build our World with hope G-H-I

E is ca-pa-ble G-H-I-E is capa-ble Let's is ca pa-ble

rise! and build our world with hope.

## MEMBERSHIP COMMITTEE MEMBERS



- |  |   |             |
|--|---|-------------|
| 1. Ing Dr. Michael Ankamah Bekoe           | - | Chairman    |
| 2. Ing Benedicta Acherekoh                 | - | Member      |
| 3. Ing Dr. Bertha Akosua Tenkoramaa Darteh | - | Member      |
| 4. Ing Harold Esseku                       | - | Member      |
| 5. Ing John Getor Esq.                     | - | Member      |
| 6. Ing Joseph Lewballah                    | - | Member      |
| 7. Ing Juliet Adu                          | - | Member      |
| 8. Ing Kingsford Daniel Laryea             | - | Member      |
| 9. Ing Prof. Kwaku Amaning Adjei           | - | Member      |
| 10. Ing Kweku Asmah                        | - | Member      |
| 11. Ing Prof. Nana Yaw Asiedu              | - | Member      |
| 12. Ing Nicholas Hammond                   | - | Member      |
| 13. Ing Dr. Patrick Amoah Bekoe            | - | Member      |
| 14. Ing Roland Sackey                      | - | Member      |
| 15. Ing Samuel Boamah Danquah              | - | Member      |
| 16. Ing Juliet M. Gbormittah               | - | Secretariat |

## MISSION STATEMENT



*To Develop, Promote and Sustain Sound and Competent Engineering Practice in Ghana Comparable to Global Standards*

## VISION

*To Build And Develop a Strong World Class Professional Body by Promoting Integrity, Accountability and Excellence in The Practice of Engineering in Ghana*

*The GhIE is the professional body which is responsible For certifying practising engineers in Ghana.*

*The GhIE derives its authority from the **Professional Bodies Decree nrcd 143, 1973 and the Engineering Council Act, 2011 (ACT 819.)***

## CORE OBJECTIVES

- *To establish and maintain a register of Engineering Practitioners Qualified to Practice in Ghana*
- *To ensure that members of the Ghana Institution of engineering maintain Professional standards, adhere to Regulations, guidelines and codes of Ethics of Engineering Practice*
- *To ensure that Engineering Practice in The country conforms to Established Technical, Environmental and Safety*

# NOTES



A series of horizontal dotted lines for writing notes.

# NOTES



A series of horizontal dotted lines for writing notes.



## Diversifying our Generation Portfolio for Sustainable Power Supply

The Volta River Authority has, since 1961, harnessed the resources of the Volta River to provide electrical energy for industrial, commercial and domestic use in Ghana, as well as transportation, fishery and recreation.

Starting with a generation capacity of 588MW, VRA now operates close to

2,474.5MW from its hydro, thermal and solar plants.

VRA continues to diversify its generation portfolio by exploring cleaner, cheaper and renewable sources of power generation such as wind and solar energy to sustain power supply.



**VOLTA  
RIVER  
AUTHORITY**

*For further information, please contact  
The Chief Executive*

**Volta River Authority**  
Electro-Volta House  
28th February Road  
P. O. Box MB 77  
Accra, Ghana

Tel: +233-30-2664941-9  
Email: [chiefx@vra.com](mailto:chiefx@vra.com)  
[corpcomm@vra.com](mailto:corpcomm@vra.com)  
Website: [www.vra.com](http://www.vra.com)