



GhIE

GHANA INSTITUTE OF ENGINEERING



4TH

INDUCTION CEREMONY

SUSTAINABLE DEVELOPMENT GOALS



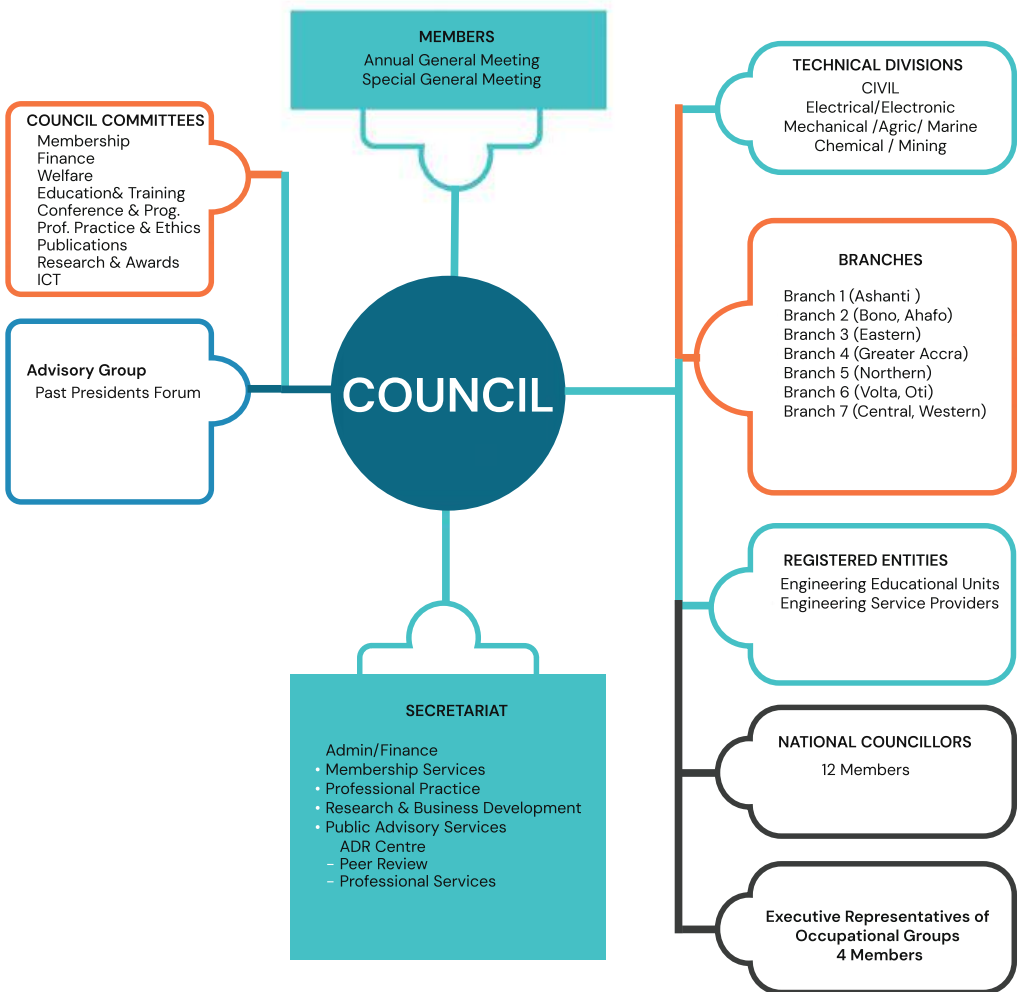
12th December, 2024

Engineering Centre, Roman Ridge, Accra

2:00pm

SPONSORS





Programme

2:00 pm

Ghana National Anthem / GhIE Anthem

1.

Opening Prayer

Ing Samuel Boamah Danquah SPE-GhIE

2.

President's welcome Remarks

Ing. Kwabena Bempong, FGhIE
(President, GhIE)

3.

Address by Chairman of Membership Committee

Ing. Dr. Patrick A. Bekoe, FGhIE

4.

Induction ceremony

Swearing of Oath
Ing. Kwabena Bempong, FGhIE
(President, GhIE)

5.

Presentation of Certificates

Chairs of Technical Division
Mechanical Chair - Ing. Darlington Ahuble
Electric Chair – Ing. Ebenezer Roberts
Civil Chair – Ing. Michael Obeng Konadu
Chemical Chair - Ing. Prof. Nana Yaw Asiedu

6.

Presentation of Awards

Ing. Dr. Patrick A. Bekoe, FGhIE

7.

Word of Advice

Ing Leslie Alex Ayeh, FGhIE (Past President)

8.

Closing Remarks

Ing. Isaac Bedu, FGhIE
Registrar, Engineering Council

9.

Closing Prayer

Ing. Juliet Adu

MC:

Ing. Edward Melomey
Ing. Juliet Adu

Brief History of GhIE



Ing. Kwabena Bempong, FGhIE
President, GhIE

Ghana Institution of Engineering (GhIE) was officially founded in 1968 to, promote quality engineering practice in Ghana comparable to global standards.

The GhIE is a professional body which is responsible for the certification of engineering practitioners (Professional Engineers, Professional Engineering Technologists, Engineering Technicians and Engineering Craftsmen) prior to registration with the Engineering Council of Ghana. The GhIE derives its authority from the Professional Bodies Decree NRCD 143, 1973 and the Engineering Council Act, 2011 (Act 819). In 1999, Women in Engineering (WinE) was founded to attract more females into the profession.

The GhIE ensures that practitioners in the Engineering industry maintain professional standards, adhere to regulations, guidelines and codes of ethics of engineering practice by conforming to internationally established technical, environmental and safety standards.

The GhIE represents over 10,000 registered professionals who are spread over the four main technical Divisions namely CIVIL, ELECTRICAL, MECHANICAL and CHEMICAL. Modern engineering disciplines such as the likes of computer engineering, aerospace engineering, biomedical, petroleum engineering, oil & gas etc, are all grouped under one of these divisions.

GhIE collaborates with the government (ministries, departments, agencies, district assemblies) and private sector (Built Environment Professionals) to enhance institutional practice in the built environment sector



Ing Samuel Magnus Asiedu, FGhIE
Ag. Executive Director, GhIE

Message from the Chairman of the Membership Committee



Ing Dr. Patrick Amoah Bekoe, FGhIE
Chairman, Membership Committee

I congratulate each and everyone of you on this auspicious occasion for becoming full members of our reputable institution. You have reached this feat by dint of hardwork and should be proud of yourselves.


The first step to becoming a professional engineering practitioner is to obtain the requisite academic qualifications. However, professionalization involves a lot more than academics. It requires one to undertake experiential learning, both technical and ethical, under the tutelage of senior professionals who later testify about ones readiness to become a qualified professional.

Our noble institution is privileged to have professionals who understand the importance of professionalization and have assisted the membership Committee on pro bono basis in examining applicants who want to become full professional members. The rigorous nature of our examination has sometimes caused many to shy away from this institution while at the same time attracting those who value professionalism to come in their numbers. Indeed the number of applicants for full membership is on the rise.

You all have gone through a three-pronged examination process, and i can confirm to the Council and the President of our insitution that you have all accredited yourselves and should be admmitted as full members.

As part of the concept of professionalism lies the importance of continuous education and maintenance of high professional standards.

I have no doubt that you are all competent in your chosen field of practice; however, with the ever-changing tehcnological horizon coupled with the effect of globalization, any professional who fails to keep learning will become



obsolete and irrelevant, especially in this fourth industrial revolution. Our Institutions guidelines for Continuous Professional Development (CPD) is something that i will recommend you judiciously follow as you embark on this professional odyssey. The maintenance of high professional standards and ethical behaviour is sine-qua-non to your professionalisation. I dare say without this your professionalism is meaningless. Thus I urge you to maintain the highest form of moral and ethical canon throughout this journey.

Finally, I invite you to positively contribute to the development of our noble Institution. Do not be passive or a bystander. Be active in committee meetings, Branch activities, Annual General Meetings , and other sanctioned activities by the council. When called upon by the Membership Committee to assist in examining incoming members, do not renege on your professional duty. I wish you all success on this long professional journey you are begining today and i hope and pray that you will help lift the name of the engineering profession in Ghana and beyond.

Sincerely

Ing Dr. Patrick Amoah Bekoe
Chairman, Membership Committee

Roll Of Members

CHEMICAL/MINING | TECHNICAL DIVISION



Ing Abigail Baffour Karikari
PE-GhIE-16844



Ing Ekow Kum Addo
PE-GhIE - 16466



Ing Charles Kofi Brefo-Nimo
PE-GhIE - 16904



Ing Desmond Owusu
PE-GhIE-16682



Ing Afua Amoah Effah
PE-GhIE-06347



Ing Dorcas Agyikrabe
Brukum
PE-GhIE -11095



Ing Bernard Akwasi
Frimpong
PE-GhIE -09529



Ing Daniel Kwame Boakye
PE-GhIE-15758



Ing Benjamin Fosu Appiah
PE-GhIE-15521



Ing Eric Kwadwo Asare
PE-GhIE -10853



Ing Abdul Raaziq Bashiru
PE-GhIE - 16568

Roll Of Members

CIVIL | TECHNICAL DIVISION



Ing Onwona Asante-Agyei
PE-GhIE-13035



Ing Kenneth Enimil Conduah
PE-GhIE -16362



Ing Samuel Ampomah Boateng
PE-GhIE -15894



Ing Charles Osei Ababio
PE-GhIE-15483



Ing William Kwabena Aning Mensah
PE-GhIE-16561



Ing Emmanuel Oppong Boakye
PE-GhIE -12222



Ing Bismark Appiagyei
PE-GhIE -14684



Ing Lukman Baba Ibrahim
PE-GhIE-16799



Ing Florence Baah
PE-GhIE-12273



Ing Philip Kekeli Kofi Elike
PE-GhIE -16562



Ing Samuel Kwesi Appiah
PE-GhIE -14005



Ing Kwame Ankomah Owusu
PE-GhIE-15501

Roll Of Members

CIVIL | TECHNICAL DIVISION



**Ing Rapheal
Nsiah- Gyambibi**
PE-GhIE-12990



Ing Joseph Arthur
PE-GhIE - 16868



Ing Richmond Kyei-Baffour
PE-GhIE - 16845



Ing Abiathar Otoo
PE-GhIE-15181



Ing Yahaya Abdul-Wahab
PE-GhIE-16858



Ing Samuel Nketia Oware
PE-GhIE - 16456



**Ing Michael Martei
Marmah**
PE-GhIE - 16840



**Ing Regina Dedokwor
Agualey**
PE-GhIE-11838



Ing Collins Adjei Baah
PE-GhIE-16714



**Ing Emmanuel Adjei
Boateng**
PE-GhIE - 16680



**Ing Jim Kwaku Zodanu
Katako**
PE-GhIE - 16110



**Ing Dr Eileen Goody
Gans-Lartey**
PE-GhIE-16954

Roll Of Members CIVIL | TECHNICAL DIVISION



**Ing Isabella Ampomah
Adu
PE-GhIE-16856**



**Ing Papa Andoh Grant
PE-GhIE -12318**



**Ing Enoch Adjei Okpoti
PE-GhIE -15175**



**Ing Theresah Agyekumwaa
Owusu-Sasu
PE-GhIE-12554**



**Ing Festus Liyilnyan
Nayan
PE-GhIE-15119**

Roll Of Members

ELECTRICAL / ELECTRONIC | TECHNICAL DIVISION



**Ing Joseph Kwesi
Djabanor
PE-GhIE-15314**



**Ing Derrick Labitey
Mensah
PE-GhIE -12536**



**Ing Christopher Zobilla
Morimaha
PE-GhIE -12140**



**Ing Gideon Tsuianaa
Ashrifie
PE-GhIE-16607**



**Ing Joseph Kumoh
Koranteng
PE-GhIE-16918**



**Ing Kofi Oppong-Amoah
PE-GhIE -16422**



**Ing Christabel
Fremah Owusu
PE-GhIE -16726**



**Ing Felix Joel Fiadonu
PE-GhIE-16380**

Roll Of Members

MECH / AGRIC / MARINE | TECHNICAL DIVISION



Ing Elie El Hajj
PE-GhIE-16905



**Ing James Amankwaa
Amoako**
PE-GhIE -16848



Ing Joseph Ekow Enyinful
PE-GhIE -16851



**Ing Pablo Kwame
Ahorsey**
PE-GhIE-06591



**Ing Prince Bright Kwame
Attipoe**
PE-GhIE-16717



**Ing Frederick Oduro
Akoto**
PE-GhIE -16440



**Ing Salifu Karimu
Nadusi**
PE-GhIE -16891



Ing Emmanuel Eshun
PE-GhIE-14128



Ing Omar Abdul Baki
PE-GhIE-16664



**Ing David Archibald
Asomaning**
PE-GhIE -16709



**Ing Egya Agyekum
Onwona-Sarfo**
PE-GhIE -12456

PROFESSIONAL ENGINEERING TECHNOLOGIST

Roll Of Member

CIVIL TECHNICAL DIVISION



Dennis Klu
PET-GHIE 16926

Engineers Pledge

I, in the presence of these persons here present, pledge the highest standards of moral, professional and ethical conduct.

I pledge to uphold, preserve, protect and defend the constitution of the Ghana Institution of Engineering (GhIE) and shall subject myself to the decisions and directives of the Council, the governing body of the Ghana Institution of Engineering.

I shall discharge my duties as an engineer in honesty, fairness and truthfulness and shall be just and courteous, exhibiting the highest form of moral philosophy.

In as far as it is within my capabilities, I shall co-operate in extending the effectiveness of the engineering profession by my contributions to the training of engineers and the safe practice of engineering in the Republic of Ghana and beyond.

I pledge to uphold the honour and dignity of the engineering profession and shall not advertise my work or merit in a self-laudatory manner, in all these, having due regards for the safety of human life, the environment and property, so help me God.

Technologists Pledge

I, in the presence of these persons here present, pledge the highest standards of moral, professional and ethical conduct.

I pledge to uphold, preserve, protect and defend the constitution of the Ghana Institution of Engineering (GhIE) and shall subject myself to the decisions and directives of the Council, the governing body of the Ghana Institution of Engineering.

I shall discharge my duties as a technologist in honesty, fairness and truthfulness and shall be just and courteous, exhibiting the highest form of moral philosophy.

In as far as it is within my capabilities, I shall co-operate in extending the effectiveness of the engineering profession by my contributions to the training of technologist and the safe practice of engineering in the Republic of Ghana and beyond.

I pledge to uphold the honour and dignity of the engineering profession and shall not advertise my work or merit in a self-laudatory manner, in all these, having due regards for the safety of human life, the environment and property, so help me God.

Names of Award Winners



Chemical/Mining

Ing Charles Kofi Brefo-Nimo
PE-GhIE - 16904



Civil

Ing Emmanuel Opong Boakye
PE-GhIE-12222



Electrical/Electronic

Ing Joseph Kumah Koranteng
PE-GhIE - 16918



Mech/Agric/Marine

Ing Pablo Kwame Ahorse
PE-GhIE - 06591

GHANA NATIONAL ANTHEM

God bless our homeland Ghana
And make our nation great and strong,
Bold to defend forever
The cause of Freedom and of Right;
Fill our hearts with true humility,
Make us cherish fearless honesty,
And help us to resist oppressors' rule
With all our will and might for evermore.

GhIE ANTHEM || By Professor Mrs. Esi Awuah HFGHIE

- 2x Engineering is the key for development
GHIE stands for Ghana's growth
We conceive, design and build for human basic needs
Protect nature for sustainability
- 2x With the help of God
The master engineer backed by excellence and integrity
GHIE is capable of making Ghana great and the world a better place to live
- GHIE is capable!
GHIE is capable!
Let's rise and build our world with hope
GHIE is capable!
GHIE is capable!
Let's rise and build our world with hope.

Allegro ♩ = 110

En-gi-neer-ing is the key for de-ve-lop-ment G-H-I-E stands for Gha-na's growth

We conceive, design and build for human basic needs protect na-ture for sus-tainabil-i-ty

With the help of God the mas-ter En-gi-neer backed by excellence and in

-ter -gi- ty. G-H-I-E is ca-pa-ble of making Gha-na great and the

world a better place to live G-H-I-E is ca-pa-ble G-H-I-E is ca-pa-ble

E is ca-pa-ble Let's rise and build our world with hope C-H-I

E is ca-pa-ble G-H-I-E is ca-pa-ble Let's rise and build our world with hope

rise and build our world with hope.

Membership Committee Members

1. Ing Dr. Patrick A. Bekoe - Chairman
2. Ing K. D. Laryea - Member
3. Ing Kweku Asmah - Member
4. Ing Harold Esseku - Member
5. Ing Sophia Tijani - Member
6. Ing Prof. Kwaku Amaning Adjei - Member
7. Ing Nicholas T. Hammond - Member
8. Ing Prof Nana Yaw Asiedu - Member
9. Ing Samuel Danquah Boamah - Member
10. Ing Joseph Lewballah - Member
11. Ing Juliet Adu - Member
12. Ing Ebenezer Ato Roberts - Member
13. Ing Dr. Bertha Akosua Darteh - Member
14. Ing Benjamin Ahunu - Member
15. Ing Roland Sackey - Member
16. Ing Edward Melomey - Member
17. Ing Emmanuel Bartels - Member
18. Ing Yaw Abrampah - Member
19. Ing George Lutterodt - Member
20. Ing Kisman Eghan - Member
21. Ing Frederick Amui Oblitey - Member

Membership Committee Members

- | | |
|-----------------------------|--------------|
| 22. Richie Owusu Acheampong | -Secretariat |
| 23. Marion Somuah Nyarko | -Secretariat |
| 24. Ayishetu Osman | -Secretariat |
| 25. Adobea Antwi | -Secretary |

Mission Statement

To Develop, Promote and Sustain Sound and Competent Engineering Practice in Ghana Comparable to Global Standards

Vision

To Build And Develop a Strong World Class Professional Body by Promoting Integrity, Accountability and Excellence in The Practice of Engineering in Ghana

The GhIE is the professional body which is responsible For certifying practising engineers in Ghana.

*The GhIE derives its authority from the **Professional Bodies Decree nrcd 143, 1973 and the Engineering Council Act, 2011 (ACT 819.)***

Core Objectives

- *To establish and maintain a register of Engineering Practitioners Qualified to Practice in Ghana*
- *To ensure that members of the Ghana Institution of engineering maintain Professional standards, adhere to Regulations, guidelines and codes of Ethics of Engineering Practice*
- *To ensure that Engineering Practice in The country conforms to Established Technical, Environmental and Safety*



Diversifying our Generation Portfolio for Sustainable Power Supply

The Volta River Authority has, since 1961, harnessed the resources of the Volta River to provide electrical energy for industrial, commercial and domestic use in Ghana, as well as transportation, fishery and recreation.

Starting with a generation capacity of 588MW, VRA now operates close to

2,474.5MW from its hydro, thermal and solar plants.

VRA continues to diversify its generation portfolio by exploring cleaner, cheaper and renewable sources of power generation such as wind and solar energy to sustain power supply.



**VOLTA
RIVER
AUTHORITY**

For further information, please contact
The Chief Executive

Volta River Authority
Electro-Volta House
28th February Road
P. O. Box MB 77
Accra, Ghana

Tel: +233-30-2664941-9
Email: chiefx@vra.com
corpcomm@vra.com
Website: www.vra.com